

CIF USB Dongle EEPROM Programming Instructions

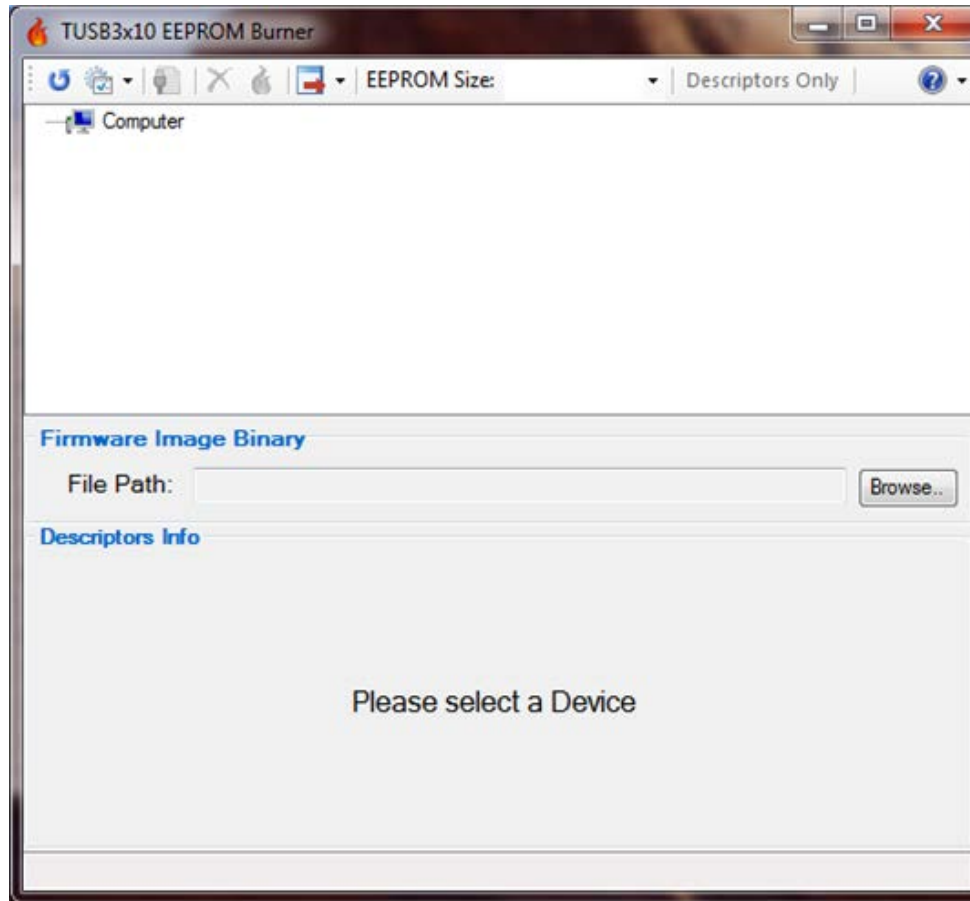
Using the TUSB3x10 EEPROM Burner Utility
08/12/2014

Install the TUSB3x10 EEPROM Burning Software

- This version of the TUSB3x10 EEPROM Burning Utility was recently developed because the previous version was not Windows 7 Compatible.
- **Note**: The driver files in this utility are not digitally signed yet so for PC's with Windows Vista or newer OS, you will have to press the F8 button at boot time and select "Disable Driver Signature Enforcement". This only needs to be done only once during the installation of the software and not every time the software is run.

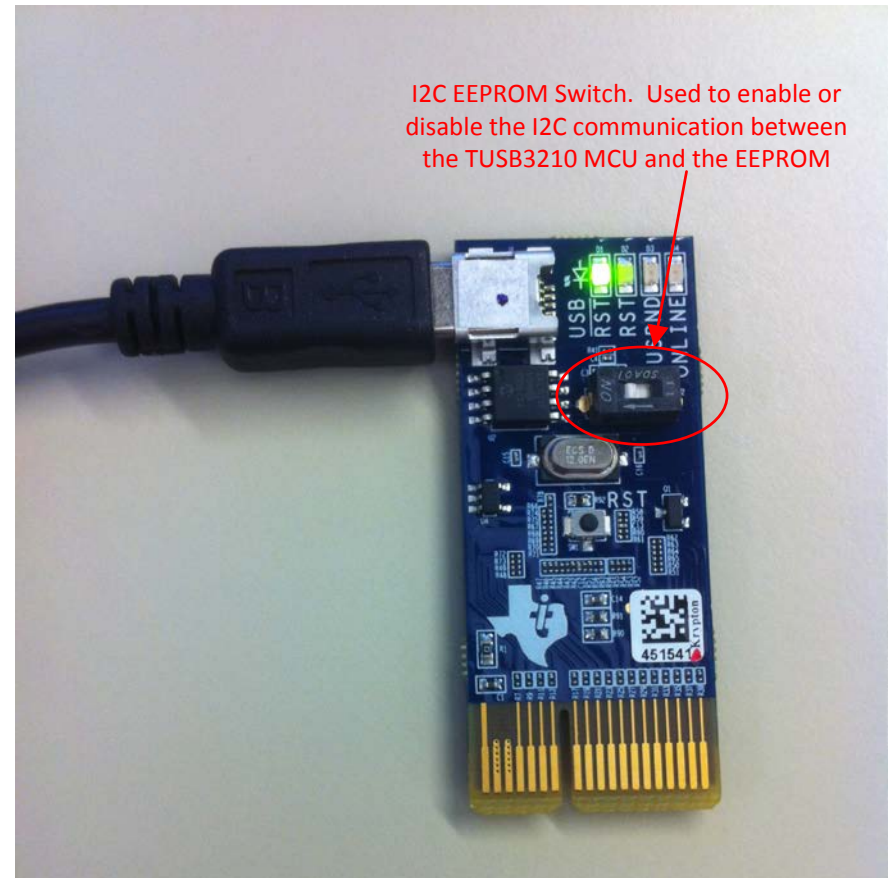
Run the TUSB3x10 EEPROM Burner Utility

- The Utility should open up and look like the following:



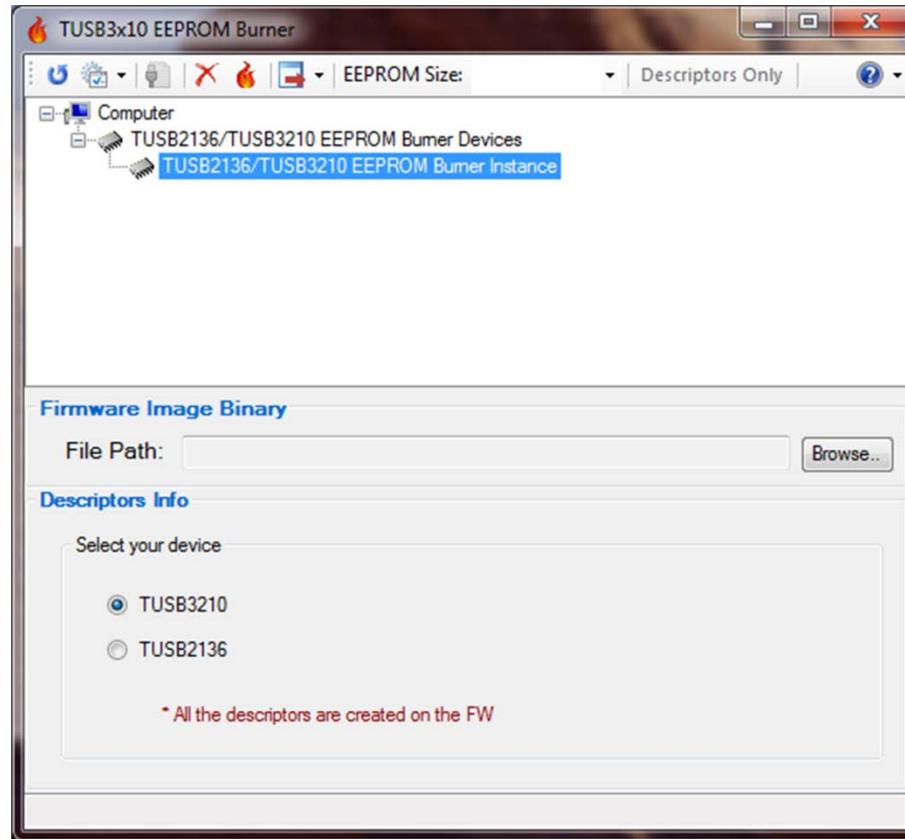
Connect the USB Dongle to the PC

- The Green USB “/RST” LED should turn on but the “ONLINE” LED should not turn on.
- Note: If the dongle has already been programmed and you would like to re-program the dongle, first toggle the dip switch before connecting the dongle to the PC. This will break the I2C connection between the EEPROM and the TUSB3210 MCU. This utility will only work if the TUSB3210 is not programmed and powers up in the factory default mode.
- Once the dongle is connected to the PC, switch the dip switch back to the original location to restore the I2C connection. If you forget to toggle the switch back, the programming will generate an error and you will need to start over.



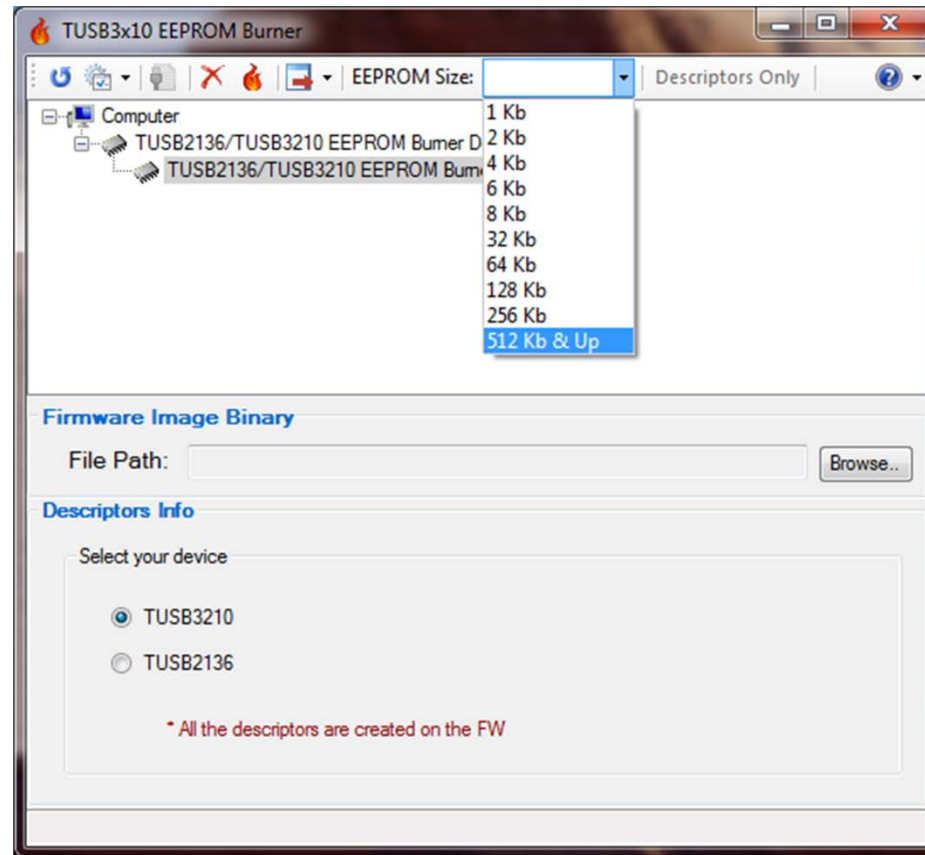
Select the Dongle from the Device List

- The TUSB3210 should appear in the device menu of the Utility. Select it as shown.



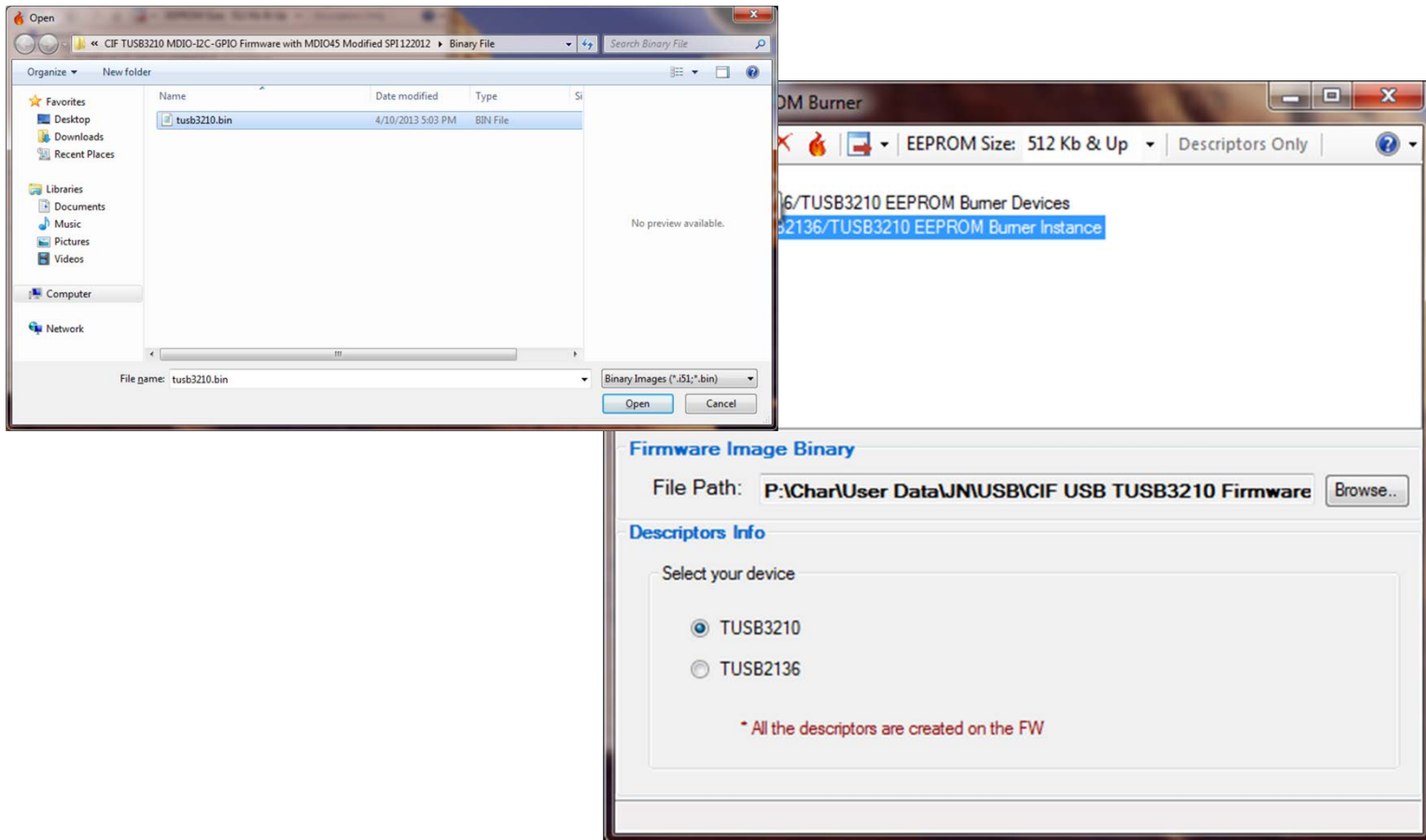
Select the EEPROM Size

- The Dongle has a 512Kb EEPROM on the board. “Select the 512 Kb & Up” selection from the menu.



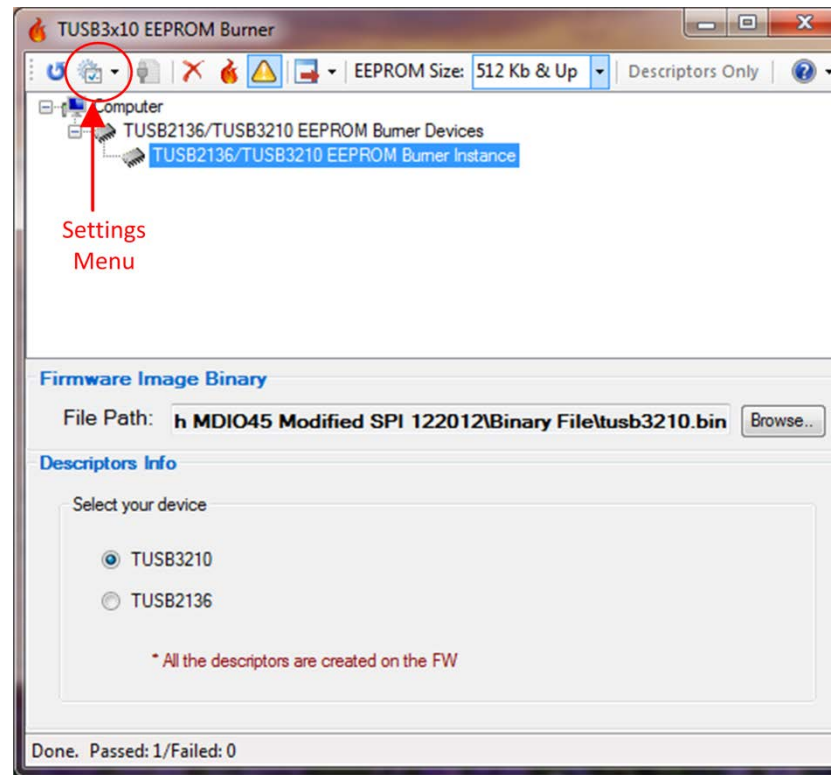
Select the Binary File to program

- Navigate to and select the TUSB3210.bin file to program.



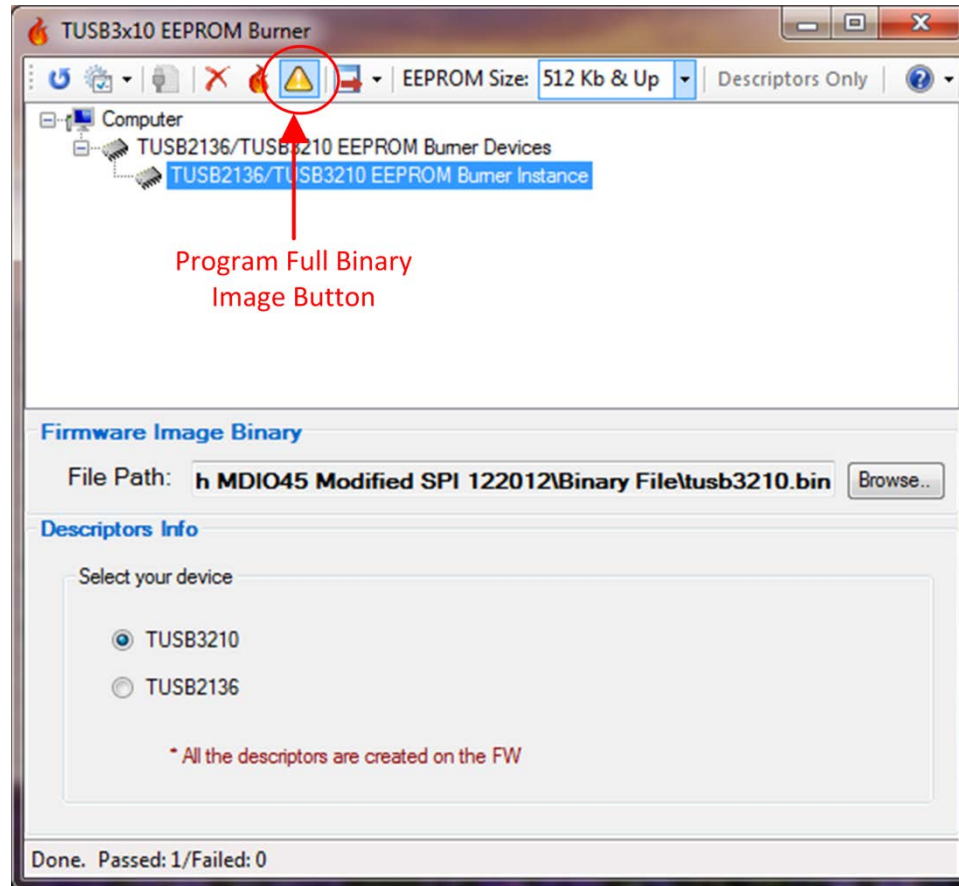
Open the Settings Menu

- Set the I2C Bus Speed to 400 KHz
- Select the “Show the “Program Full Binary Image” button” A new button with a yellow triangle will appear in the menu



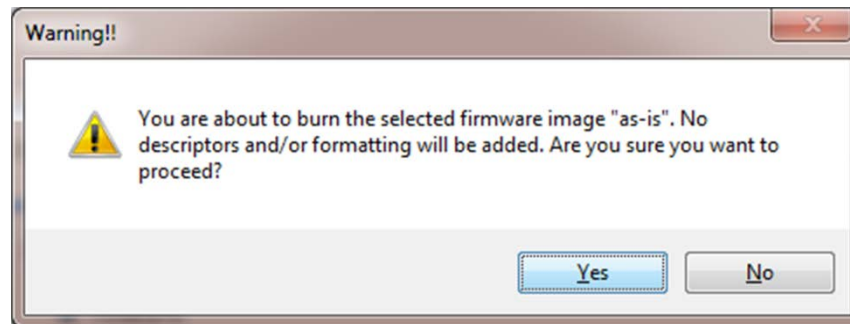
Program the EEPROM

- Press the “Program Full Binary Image Button” to start programming the EEPROM.



Burn “As-Is”

- The USB firmware requires USB Header Descriptors. This new version of the EEPROM Burner Utility has the ability to automatically generate these descriptors and append them to the “Front” of the binary image file before the EEPROM is programmed.
- However, our binary image file already has the descriptors included and allowing the utility to generate new descriptors will cause two copies of the descriptors and offset the location of all the other data bytes.
- Using the Program Full Binary Image button will skip the descriptor generation step and display the following warning. Click Yes to Proceed.



Programming Complete

- **The Dongle s now ready to be used.**

